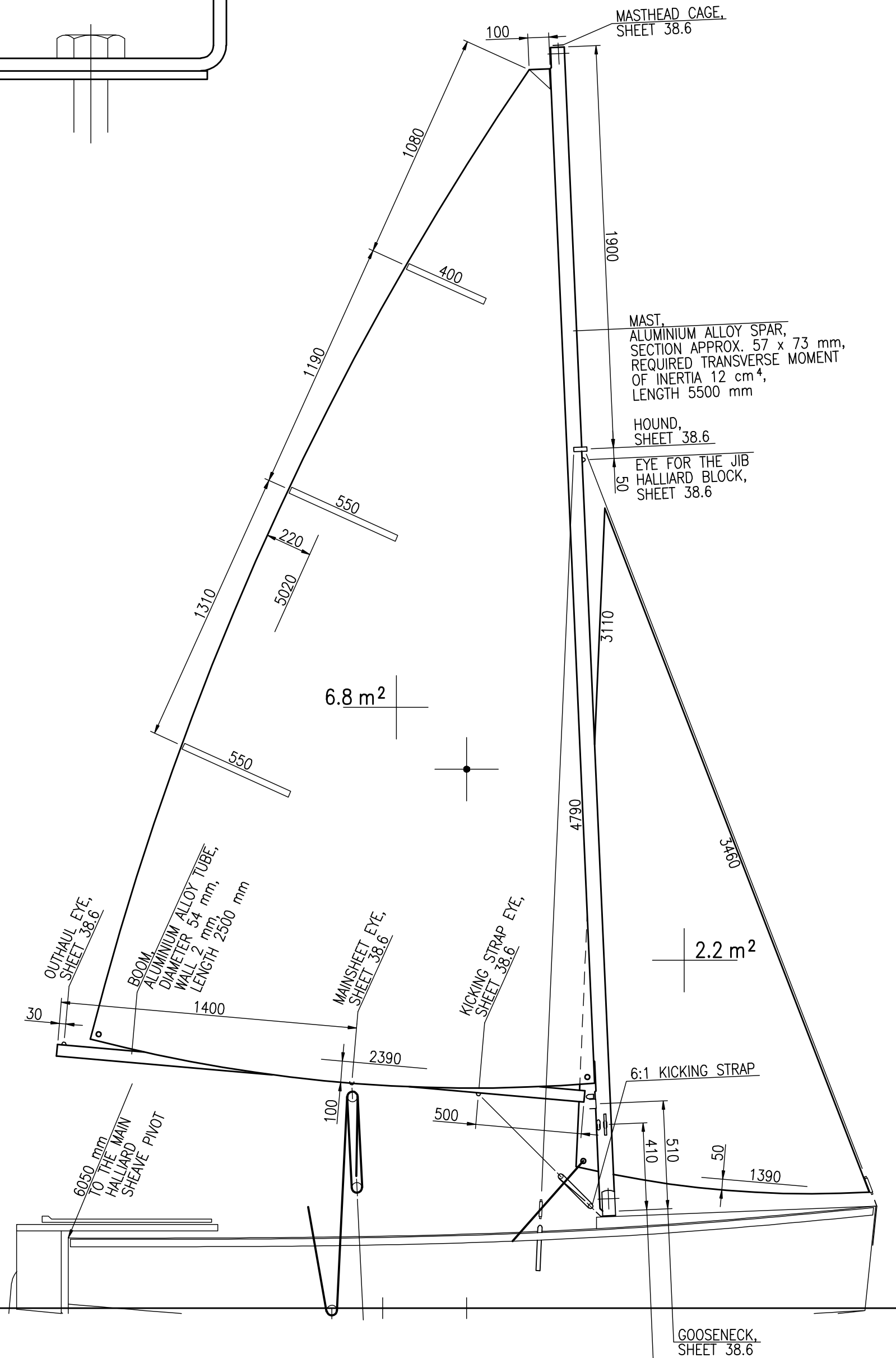
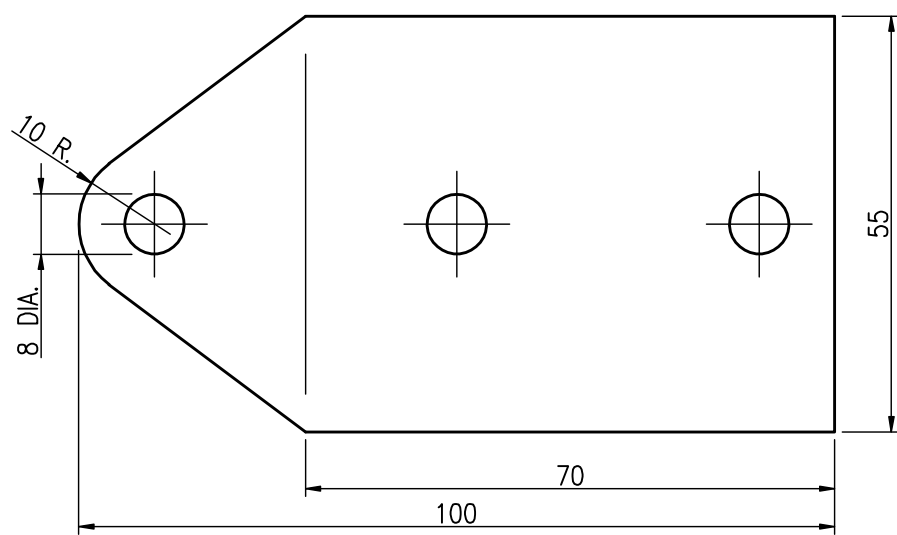


MAST TABERNACLE AND KICKING STRAP EYE PLATE

STAINLESS STEEL

FASTENED TOGETHER WITH M8 STAINLESS STEEL BOLTS



WIRE RIGGING

FORESTAY SHROUDS	3 mm	STAINLESS STEEL 1 x 19
KICKING STRAP EXTENSION MAINSHEET EXTENSION		STAINLESS STEEL 7 x 7 PVC COVERED

ROPE RIGGING

MAINSHEET JIB SHEET	10 mm	BRAIDED MATT POLYESTER
DAGGERBOARD HANDLE	8 mm	PLAITED OR BRAIDED POLYESTER
KICKING STRAP CUNNINGHAM OUTHAUL RUDDER BLADE CONTROL LINE	5 mm	
MAIN HALLIARD JIB HALLIARD		SPECTRA/DYNEEMA OR KEVLAR

GOOSENECK,
SHEET 38.6

MAIN AND JIB HALLIARD CLEATS,
LENGTH 100 mm, SHEET 38.6

SMALL SIZE V-CLEAT FOR
THE CUNNINGHAM, FASTENED ON
STARBOARD SIDE TO THE LUFF
GROOVE WALL WITH POP RIVETS,
7 mm DIA. HOLE ON OPPOSITE
SIDE FOR THE CUNNINGHAM END
STOP KNOT

3.8m

SAILS AND SPARS
SHEET 38.4/6, SIZE A2
SCALE 1:1, 1:20

RADOSŁAW WERSZKO
OCTOBER 2006